

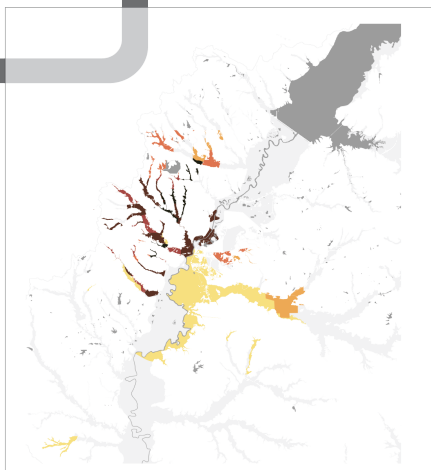
CEJST Burden Map



FEMA floodplain map

CEJST Burden Map
clipped with floodplain

(Full size on page 28)



Geospatial Clipping and Floodplain demographics

The communities most impacted by the flood reduction benefits of any project are those within in the floodplain. The maps in the following pages approximate the demographics of these communities through *clipping*. Only the parts of a demographic map overlapping the floodplain are shown. The clipping operation is summarized in the figure on the opposite page.